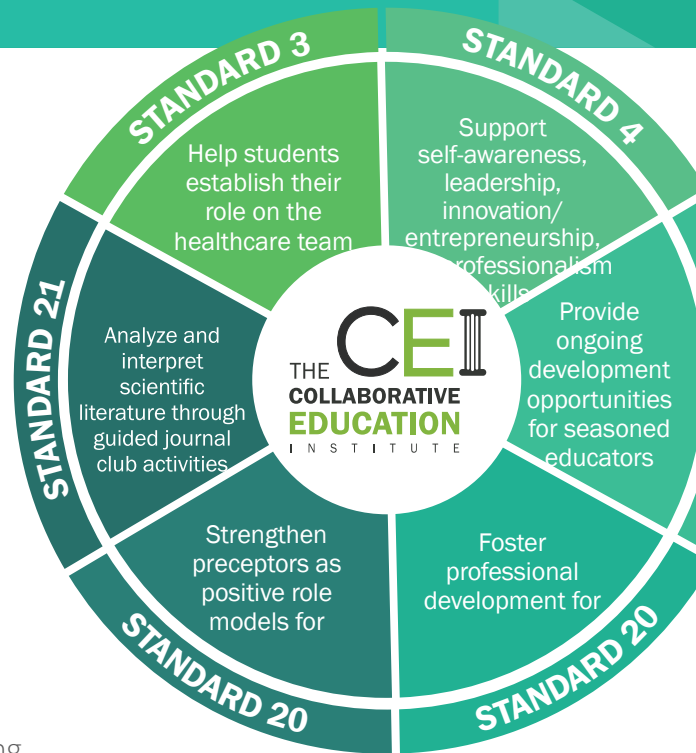




PRECEPTORS

PRECEPTOR EDUCATION NOW AVAILABLE TO YOU!

We've partnered with The Collaborative Education Institute (CEI) to bring you quality Preceptor Development opportunities in the areas of **Core Modules, Drug Therapy, e-Journal Club (L2L), Law, Patient Safety and Teaching & Learning**. CEI's Preceptor Bucket includes an entire suite of programs of practical tools to help you engage your students and residents and help you make the most of your teaching site. Including a monthly online journal club discussion - Login To Learn (L2L) - that allows preceptors and students to review and evaluate a clinical, primary literature article. L2L is LIVE, online on the second Wednesday of every month from 12noon - 1:00pm (central).



HOW DO I ACCESS ACTIVITIES?

1. Login to E*Value at www.e-value.net and choose the Learning Modules tab, select CEI from the submenu and follow the prompts to the CEI website.
2. At the CEI website click on the teal Preceptors icon.
3. To Register for an activity, click on any title within the Preceptors icon and click REGISTER.
4. On the payment screen, select "Register for Free". Then access your activity(ies) within My Profile.



*All activities will be populated into your PENDING folder. Please review activities in your Profile and move them to the appropriate folder to continue on to receive CPE credit. Move activities you wish to participate in to the TO DO folder, activities you don't think you'll complete to NOT NOW or DELETE if not interested.

"I have been a preceptor for about 5 years, and I now know how to better direct the students in this generation! ... I want them to think for themselves and develop their own styles."

HOW DO I SUBMIT MY CPE?

1. Login to E*Value at www.e-value.net and choose the Learning Modules tab, select CEI from the submenu and follow the prompts to the CEI website. **Click on MY PROFILE - CLAIM CPE.**
2. Locate the activity you wish to complete under TO DO, click the activity title to access activity and handouts.
3. After completing activity, go to the Home Page by clicking Back (at the top right) or the CEI logo (top left). Click on My Profile/Claim CPE.
4. Locate activity and click Exam under Go To Column, once completed you will be prompted to complete the Evaluation, then click SUBMIT to send to CPE Monitor.

QUESTIONS? We're here to help! Please contact Cindy Smith at csmith@gotocei.org or **515-270-8118**.

Accessing CEI Preceptor Development & CE Modules

1. Log into E-Value (www.e-value.net)
2. Click on "Learning Modules" tab
3. Click on CEI link (located in blue banner)
4. Click on "Connect to CEI Account" link
5. Click on "here" (last line of the Connect to CEI Account information)
6. This takes you to the CEI home page.

****Please remember, for free access through UGA, you will have to login through your e-value account.****

Step One: Build your Profile information to allow CE processing and also indicate your preceptor status.

1. Click on "My Profile – Claim CPE" in middle of the page
2. Click on "Edit My Profile Information" which is a small green link under the second box
3. Complete information – Be sure to indicate the following:
 - a. Email address
 - b. Name
 - c. NABP e-profile ID
 - d. Birthday MMDD
 - e. Primary Practice Setting
 - f. Title
 - g. Are you a Preceptor – Answer Yes
 - h. Select School – CHOOSE University of Georgia College of Pharmacy (It is a drop down where you can choose other schools as well)
 - i. Click "Submit"

If you ever need to get back to the CEI Homepage, please click the CEI logo in the upper left corner

Step Two:

As a UGA College of Pharmacy preceptor, you have free access to all items in the teal "Preceptor" section. To register for a course / activity, click on the name and then hit "register." On the payment screen, select "Register for Free." You can then access your activity (activities) within My Profile. Initially, the activity will be in the pending activities file. You then need to move it to the TO DO ACTIVITIES. Click the activity title to access the activity and handouts. After completing the activity, go to the Home Page by clicking on the CEI logo (top left). Click on "My Profile / Claim CPE". Locate activity and click GO TO Column, once completed you will be prompted to complete the Evaluation, then click SUBMIT to send to CPE Monitor.

Activities within the Preceptor section include online modules as well as monthly (10 per year) webinars which are under the e-Journal Club section (Log-In To Learn). You will receive information about the new CE options (including the journal clubs) if you check the box to receive emails under your profile. Please note, you will also receive emails about modules which are not part of your free access. If the emails are bothersome, you may choose to log in once a month instead to identify new activities of interest. The Log-In To Learn Webinars should be registered for in advance. There is no limit on the number of attendees. The journal clubs can also be accessed after the live webinar is completed. The journal clubs can also be incorporated into your rotation as an activity to complete with your students.

If you have difficulties with the system, please contact team@ceiimpact.com (515-270-8118). You can also contact the UGA Experience Programs Office. (706-542-5328)