



**UNIVERSITY OF
GEORGIA**
College of Pharmacy

Program information and the supplemental application can be accessed online at rx.uga.edu.
Questions also may be directed to the Office of Student Affairs at admissions@rx.uga.edu or
by calling (706) 542-5278.

Follow us on social media:



@UGACollegeOfPharmacy



@UGApharmacy



@pharmdawgs

*Why should the University of Georgia
be your number one choice for your
pharmacy education?*

Here are just a few reasons...

TUITION COSTS & STUDENT FEES

- Affordable tuition for a quality education
- Lowest tuition and student fees in the state

SCHOLARSHIPS

- \$60,000 available for first year students
- More than \$240,000 total in scholarships for all four years

NAPLEX LICENSING EXAM & MPJE EXAM

- NAPLEX:
 - » Over 97% first-time pass rate
 - » 10% higher than the national average
 - » At least 12% higher than other pharmacy schools in Georgia
- MPJE:
 - » Pass rate: 86.7%
 - » Highest pass rate in the state of Georgia

RESIDENCY MATCH RATE

- PGY 1 match rate: 73% (national average 64%)
- PGY 2 match rate: 75%

STUDENT SUPPORT SERVICES

- The UGA College of Pharmacy provides more than just a quality pharmacy education. Students have access to support services, including:
 - » Academic support & counseling
 - » Career counseling and services

STUDENT ORGANIZATIONS

- 17 student organizations, including professional student organizations
- Provides leadership, professional development, practice, and networking opportunities

ALUMNI

- Approximately 7,500 living alumni of the College of Pharmacy

DATES AND DEADLINES

- Mid July: PharmCAS & UGA Supplemental application opens
- Early September: Early Decision application deadline
- Mid October: Early Decision announcements made
- Early February: Regular Decision application deadline
- April: All admissions decisions finalized



**UGA is a Top 25
Pharmacy program**
(US News & World Report)

Pharmacists are the top #2 and #3 highest paying jobs in the United States! Only physicians ranked higher.

#2. Pharmacy Managers
\$146,412*

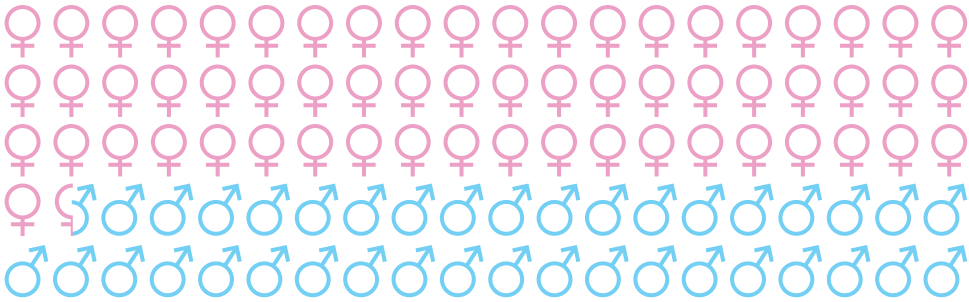
#3. Pharmacist
\$127,120*

*Median Base Salary

STUDENT PROFILE

Gender:

- Female: 61.5%
- Male: 38.5%



Averages for incoming first year class (2018):

GPA: 3.4
(on prerequisite courses)

PCAT: 75%
composite

Previous UGA experience:
50.3%

Race/Ethnicity:

- White/Caucasian
- Asian/Asian-American
- Black/African-American
- Hispanic
- Multiracial
- American Indian
- Native Hawaiian
- Did not report

