

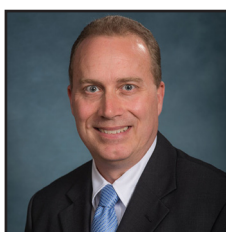


# FACULTY DIRECTORY FOR RESEARCH COLLABORATION

Published May 2018

Updated March 2021

# PURPOSE



**Michael Bartlett, Ph.D.**  
*Associate Dean for Science  
Education, Research and  
Technology*

March 8, 2021

Dear Faculty,

The Faculty Research Directory was created to provide a resource for quick overview of each faculty member's research interests and areas that are open to collaboration.

My hope is that this information will be useful to you as you search for faculty members with whom your research interests and areas of opportunities align. Thank you for your commitment to our college and to excellence in research.

Sincerely,

A handwritten signature in black ink that reads "Michael S. Bartlett". The signature is written in a cursive, flowing style.

# CONTENTS

**Research Vision . . . . . 4**

## **Research Teams**

**Cancer . . . . . 5-7**

**Infectious Diseases . . . . . 8-10**

**Neuroscience . . . . . 11-12**

**Scholarship of Teaching & Learning . 13-16**

**Vascular Diseases . . . . . 17-20**

# RESEARCH VISION

*Our thriving culture of scholarship drives us to be a leader of interdisciplinary and innovative research in therapeutic discovery, application, and education to improve health in Georgia and beyond.*

# CANCER

## Research Team

### MICHAEL BARTLETT, PH.D.

**Research Areas:** Methods to determine therapeutic agents, metabolites and degradation products from biological and non-biological matrices; oligonucleotide therapeutics & biomarkers

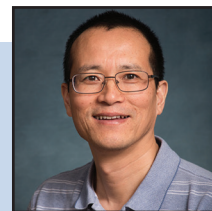


**Opportunities for Collaboration:** DMPK studies of therapeutic agents; assessment of biomarkers for diseases

*mgbart@uga.edu*

### HOUJIAN CAI, PH.D.

**Research Areas:** Protein acylation in cancer progression, fatty acylation metabolism, drug discovery on inhibition of N-myristoyltransferases, stromal-epithelial crosstalk in prostate stem cells



**Opportunities for Collaboration:** Drug delivery, medicinal chemistry for drug development, protein quantification by mass spectrometry

*caihj@uga.edu*

### AMBER CLEMMONS, PHARM.D.

**Research Areas:** Supportive care, hematologic malignancies, adult bone marrow transplantation and Scholarship of Teaching and Learning



**Opportunities for Collaboration:** Malignant hematology, immunocompromised infectious diseases and cellular transplantation

*aclemmons@augusta.edu*

### EWAN COBRAN, PH.D.

**Research Areas:** Health services and disparities; comparative effectiveness; cancer screening, prevention and outcomes; community-based participatory research; patterns of care; nativity; and large data analysis



**Opportunities for Collaboration:** Health informatics, health outcomes research, cancer survivorship, genomics, health disparities, health literacy and communication

*ecobran@uga.edu*

### DAVID CRICH, DÈSSC

**Research Areas:** Medicinal chemistry, carbohydrate chemistry, synthetic methodology



**Opportunities for Collaboration:** Applications of medicinal chemistry to drug development

*David.Crich@uga.edu*

### BRIAN CUMMINGS, PH.D.

**Research Areas:** Molecular mechanisms in cell death, specifically role of lipids and water disinfection byproducts



**Opportunities for Collaboration:** Medicinal chemistry and small molecule cancer screening assays; nanoparticle formulation and drug delivery; lipidomic analysis of post-disease tissues

*briansc@uga.edu*

# CANCER

## Research Team

### EILEEN KENNEDY, PH.D.

**Research Areas:** Design of allosteric inhibitor compounds targeting kinase activation and signaling

**Opportunities for Collaboration:** Kinase signaling and disease



*ekennedy@uga.edu*

### DEXI LIU, PH.D.

**Research Areas:** Gene/protein as a drug for prevention and treatment of obesity, diabetes, cancer, and other diseases

**Opportunities for Collaboration:** Gene therapy, obesity research, drug delivery and protein drug discovery



*dliu@uga.edu*

### MANDI MURPH, PH.D.

**Research Areas:** Molecular mechanisms to prevent chemoresistance or prolong remission by extending time until chemoresistance develops in mammalian cells

**Opportunities for Collaboration:** Chemistry



*mmurph@uga.edu*

### ARTHUR ROBERTS, PH.D.

**Research Areas:** Drug interactions and multidrug resistance transporter

**Opportunities for Collaboration:** Labs with innovative experimental/computational approaches applicable to MDR transporter; translating *in vitro* studies with labs with animal and clinical experiments with MDR transporter



*audie@uga.edu*

### SOMANATH SHENOY, PH.D.

**Research Areas:** Molecular mechanisms regulating vascular permeability, angiogenesis, integrin activation, extracellular matrix remodeling and tumor growth

**Opportunities for Collaboration:** Assistance with statistical analysis for protocol approvals, research data analysis, and grant applications



*sshenoy@augusta.edu*

### UMA SINGH, PH.D.

**Research Areas:** Antiviral drug discovery, epigenetic approach for the discovery and development of new anticancer agents

**Opportunities for Collaboration:** Antiviral nucleoside evaluations against various emerging viruses; anticancer screening of the modified nucleosides against the pancreatic, lung, liver, kidney, and prostate cancer cell lines; pharmacology studies of the drug molecules



*ussingh@augusta.edu*

# CANCER

## Research Team

### MAY XIONG, PH.D.

**Research Areas:** Drug delivery and pharmaceuticals, specifically the design of macromolecules to improve iron chelation therapy and strategies to combat multi-drug resistance in bacteria

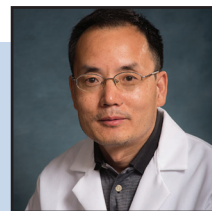


**Opportunities for Collaboration:** Any area in which drug delivery is a challenge

*mayxiong@uga.edu*

### Y. GEORGE ZHENG, PH.D.

**Research Areas:** Epigenetic therapies and chemical biology strategies and probes to interrogate protein acetylation- and methylation regulated disease processes



**Opportunities for Collaboration:** With those who have specialized expertise in pharmacology, such as MS and proteomics

*yzheng@uga.edu*

# INFECTIOUS DISEASES

## Research Team

### CHRISTOPHER BLAND, PHARM.D.

**Research Areas:** Critical care, Infectious Diseases, drug dosing in obesity, antimicrobial stewardship

**Opportunities for Collaboration:** Synergy and collaboration among faculty who research in critical care or Infectious Diseases areas

*cmbland@uga.edu*

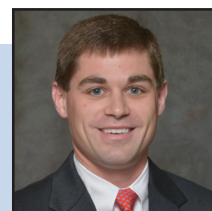


### DANIEL CHASTAIN, PHARM.D.

**Research Areas:** HIV/AIDS, opportunistic infections, antimicrobial resistance, and antimicrobial stewardship

**Opportunities for Collaboration:** Co-investigators with shared research interests

*daniel.chastain@uga.edu*



### DAVID CRICH, DÈSSC

**Research Areas:** Medicinal chemistry, carbohydrate chemistry, synthetic methodology

**Opportunities for Collaboration:** Applications of medicinal chemistry to drug development

*David.Crich@uga.edu*

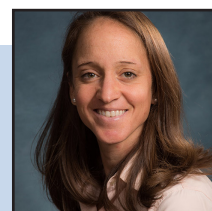


### VIRGINIA FLEMING, PHARM.D.

**Research Areas:** Clinical pharmacy practice in adult internal medicine and Infectious Diseases

**Opportunities for Collaboration:** Between ID pharmacists on different campuses with clinical research projects

*gin13@uga.edu*



### NEIL GRIMSEY, PH.D.

**Research Areas:** Inflammatory signaling, pulmonary and neurovascular inflammation, acute respiratory distress syndrome, live cell imaging, biosensors and design of novel therapeutics

**Opportunities for Collaboration:** Imaging, vascular studies (primary cells), and kinase signaling assays

*neilgrimsey@uga.edu*



### DIEGO HUET, PH.D.

**Research Areas:** Organellar biology of apicomplexans, a group of eukaryotic parasites; metabolomics, proteomics and CRISPR based-approaches to understand the highly divergent biology of apicomplexans, reveal phylum-specific adaptations and harness them to treat infectious diseases

**Opportunities for Collaboration:** Microbiology, tropical and emerging global diseases

*diego.huet@uga.edu*





# INFECTIOUS DISEASES

## Research Team

### J. RUSSELL MAY, PHARM.D.

**Research Areas:** Drug policy development and management, allergic rhinitis, Infectious Diseases, and evaluation of new drugs

**Opportunities for Collaboration:** With masters students working on clinical projects

[jmay@augusta.edu](mailto:jmay@augusta.edu)



### CORY MOMANY, PH.D.

**Research Areas:** Application of atomic structures to biological and pharmaceutical problems using molecular biology, biochemistry, structure-based drug discovery and macromolecular X-ray crystallography

**Opportunities for Collaboration:** RNA structural studies (non-coding and small RNA) and RNA/protein complexes, antibiotic resistance (bacterial) mechanisms, bacterial antibiotic discovery, efficient cloning, large-scale protein production, any kind of X-ray crystallography problem and bacterial transcriptional studies

[cmomany@uga.edu](mailto:cmomany@uga.edu)



### SCOTT PEGAN, PH.D.

**Research Areas:** Regulation of the human innate immune system; discovery of new therapeutics for nerve and pesticide agent poisoning; discovery of new antibiotics for use against TB

**Opportunities for Collaboration:** Infectious Diseases

[spegan@uga.edu](mailto:spegan@uga.edu)

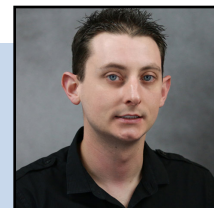


### CHRISTOPHER RICE, PH.D.

**Research Areas:** Drug discovery and development of therapeutic agents against three pathogenic free-living amoebae

**Opportunities for Collaboration:** Manager of the Center for Drug Discovery helping others with their drug discovery needs; interested in novel methods of drug delivery to the brain or molecules that can penetrate into the CNS

[christopher.rice@uga.edu](mailto:christopher.rice@uga.edu)



### BRIAN SEAGRAVES, PHARM.D.

**Research Areas:** Treatment and care of HCV- and HBV-infected patients

**Opportunities for Collaboration:** Partnering with social work faculty; Scholarship of Teaching & Learning

[cgraves@uga.edu](mailto:cgraves@uga.edu)



### SOMANATH SHENOY, PH.D.

**Research Areas:** Molecular mechanisms regulating vascular permeability, angiogenesis, integrin activation, extracellular matrix remodeling and tumor growth

**Opportunities for Collaboration:** Assistance with statistical analysis for protocol approvals, research data analysis, and grant applications

[sshenoy@augusta.edu](mailto:sshenoy@augusta.edu)



# INFECTIOUS DISEASES

## Research Team

### UMA SINGH, PH.D.

**Research Areas:** Antiviral drug discovery, epigenetic approach for the discovery and development of new anticancer agents



**Opportunities for Collaboration:** Antiviral nucleoside evaluations against various emerging viruses; anticancer screening of the modified nucleosides against the pancreatic, lung, liver, kidney, and prostate cancer cell lines; pharmacology studies of the drug molecules

[ussingh@uga.edu](mailto:ussingh@uga.edu)

### REBECCA STONE, PHARM.D.

**Research Areas:** Contraception, medication use during pregnancy and medication adherence

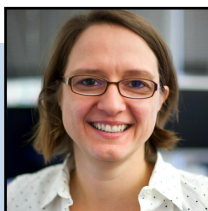


**Opportunities for Collaboration:** Between clinical practice faculty and PSHOP researchers

[rhstone@uga.edu](mailto:rhstone@uga.edu)

### EVA-MARIE STRAUCH, PH.D.

**Research Area:** Protein design and engineering, design of anti-virals and immunogens, immunoinformatics, protein chemistry and re-purposing of viral surface proteins, computational biology



**Opportunities for collaborations:** Vaccine design, protein-based therapeutics, protein mediated drug delivery

[estrauch@uga.edu](mailto:estrauch@uga.edu)

### CATHERINE WHITE, PH.D.

**Research Areas:** Pharmacokinetics of new investigational therapeutic agents/environmental toxins including both *in vitro* and *in vivo* testing; analysis of data to generate pharmacokinetic parameters; bioanalytical analysis; stability testing, brain disposition of compounds; drug metabolism and educational research



**Opportunities for Collaboration:** Toxicology, preclinical evaluation of new therapeutic agents or formulations, drug delivery, medicinal chemistry, brain disposition of compounds, and educational research

[cwhite44@uga.edu](mailto:cwhite44@uga.edu)

### MAY XIONG, PH.D.

**Research Areas:** Drug delivery and pharmaceuticals, specifically the design of macromolecules to improve iron chelation therapy and strategies to combat multi-drug resistance in bacteria



**Opportunities for Collaboration:** Any area in which drug delivery is a challenge

[mayxiong@uga.edu](mailto:mayxiong@uga.edu)

### DUO ZHANG, PH.D.

**Research Areas:** Innate immune response, noncoding RNAs, thyroid hormone signaling pathway, extracellular vesicles



**Opportunities for Collaboration:** Basic and translational studies in pulmonary diseases such as bacterial or viral induced pneumonia, COPD, lung injury

[duozhang@uga.edu](mailto:duozhang@uga.edu)

# NEUROSCIENCE

## Research Team

### DAVID CRICH, DÈSSC

**Research Areas:** Medicinal chemistry, carbohydrate chemistry, synthetic methodology

**Opportunities for Collaboration:** Applications of medicinal chemistry to drug development

*David.Crich@uga.edu*



### NEIL GRIMSEY, PH.D.

**Research Areas:** Inflammatory signaling, pulmonary and neurovascular inflammation, acute respiratory distress syndrome, live cell imaging, biosensors and design of novel therapeutics

**Opportunities for Collaboration:** Imaging, vascular studies (primary cells), and kinase signaling assays

*neilgrimsey@uga.edu*



### SHELLEY HOOKS, PH.D.

**Research Areas:** Molecular mechanisms by which cellular signaling regulates cell function and how mechanisms go awry in cancer and central nervous system disorders

**Opportunities for Collaboration:** Sharing instrumentation; molecular techniques

*shooks@uga.edu*



### JAYANI JAYAWARDHANA, PH.D.

**Research Areas:** Health economics, health policy, pharmaceutical economics, substance use, prescription drugs and large secondary data analysis

**Opportunities for Collaboration:** Health economics, health policy and health services research

*jayaward@uga.edu*



### PRIYA NARAYANAN, PH.D.

**Research Areas:** Mechanisms of neuro-vascular injury in retina, diabetic retinopathy and optic neuritis

**Opportunities for Collaboration:** Neurovascular diseases of the eye

*pnarayanan@augusta.edu*

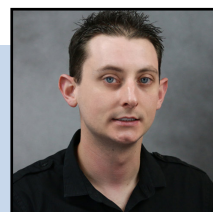


### CHRISTOPHER RICE, PH.D.

**Research Areas:** Drug discovery and development of therapeutic agents against three pathogenic free-living amoebae

**Opportunities for Collaboration:** Manager of the Center for Drug Discovery helping others with their drug discovery needs; interested in novel methods of drug delivery to the brain or molecules that can penetrate into the CNS

*christopher.rice@uga.edu*



# NEUROSCIENCE

## *Research Team*

### MAY XIONG, PH.D.

**Research Areas:** Drug delivery and pharmaceuticals, specifically the design of macromolecules to improve iron chelation therapy and strategies to combat multi-drug resistance in bacteria



**Opportunities for Collaboration:** Any area in which drug delivery is a challenge

[mayxiong@uga.edu](mailto:mayxiong@uga.edu)

### JASON ZASTRE, PH.D.

**Research Areas:** Impact of vitamin B1 on cancer progression



**Opportunities for Collaboration:** Techniques or expertise found in another lab

[jzastre@uga.edu](mailto:jzastre@uga.edu)

# SCHOLARSHIP OF TEACHING & LEARNING

## Research Team

### WARREN BEACH, PH.D.

**Research Areas:** Relationship between PCAT performance and performance in courses requiring math skills and those requiring application of knowledge or critical thinking

**Opportunities for Collaboration:** Enhance learning and retention throughout curriculum; applying basic pharmaceutical sciences to clinical practice

*wbeach@uga.edu*



### KAY BROOKS, M.ED., R.PH.

**Research Areas:** Experiential education, simulation/standardized patients, motivational interviewing, SBIRT

**Opportunities for Collaboration:** Interprofessional education, simulation/standardized patients and Scholarship of Teaching & Learning

*klbrooks@uga.edu*



### ANDREW DARLEY, PHARM.D.

**Research Areas:** Experiential education, health system pharmacy practice, pharmacy residency training, and internal medicine

**Opportunities for Collaboration:** Scholarship of Teaching & Learning and practice-based research

*badarley@uga.edu*



### DUC DO, PH.D.

**Research Areas:** Scholarship of Teaching & Learning, particularly in area of PharmD admissions and academic support services

**Opportunities for Collaboration:** Scholarship of Teaching & Learning

*duc.do@uga.edu*



### LORI DUKE, PHARM.D.

**Research Areas:** Experiential learning and student professional development

**Opportunities for Collaboration:** Within experiential learning and among experiential faculty from other institutions

*ljduke@uga.edu*



### DEBORAH ELDER, PH.D.

**Research Areas:** Pharmaceutical products, beyond-use-dating of compounded non-sterile pharmaceuticals, drug formulation for individualized care and technology in pharmacy education

**Opportunities for Collaboration:** Specialized dosage form preparations for human/veterinary trials, optimization of care with individualized pharmaceutical dosage forms and technology use to improve student learning

*dlstrong@uga.edu*





# SCHOLARSHIP OF TEACHING & LEARNING

## Research Team

### MICHAEL FULFORD, PH.D.

**Research Areas:** Educational policy, assessment of learning, curriculum review/design, accreditation program review, student development theory, admissions and enrollment management, co-curricular activities, instructional design, strategic planning, intercollegiate athletics, academic support, embedded assessment

**Opportunities for Collaboration:** Assessment of interprofessional education, co-curricular activities, accreditation and self-study development, predictors of student performance, pharmacist's patient care process, assessment of affective domains and professionalism

*mfulford@uga.edu*



### NEIL GRIMSEY, PH.D.

**Research Areas:** Inflammatory signaling, pulmonary and neurovascular inflammation, acute respiratory distress syndrome, live cell imaging, biosensors and design of novel therapeutics

**Opportunities for Collaboration:** Imaging, vascular studies (primary cells), and kinase signaling assays

*neilgrimsey@uga.edu*



### ASHLEY HANNINGS, PHARM.D.

**Research Areas:** Ambulatory care, community pharmacy, diabetes, entrepreneurship, immunizations and Scholarship of Teaching & Learning

**Opportunities for Collaboration:** Scholarship of Teaching & Learning, practice-based research and ambulatory care

*ahanning@uga.edu*



### JOHNNA HODGES, M.ED., M.S.

**Research Areas:** Active engagement of students with online programs, development of digital multimedia learning, online accessibility issues, distance learning administration

**Opportunities for Collaboration:** Multimedia learning for emergency preparedness, veterinary medicine, and public health; multidisciplinary collaboration

*jhodges@uga.edu*



### BLAKE JOHNSON, PHARM.D., MPH

**Research Areas:** Scholarship of Teaching and Learning, chronic disease state management, health disparities, cardiovascular disease

**Opportunities for Collaboration:** Local and state health disparity initiatives, clinical decision support tools for chronic disease state management

*brj53453@uga.edu*



### DEVIN LAVENDER, PHARM.D.

**Research Areas:** Ambulatory care pharmacy practice, chronic disease state management, pharmacy student/resident training and development

**Opportunities for Collaboration:** Development of ambulatory care pharmacy services, chronic disease state management (COPD, diabetes, hypertension, hyperlipidemia, heart failure), pharmacy student/resident training and development

*devin.lavender@uga.edu*



# SCHOLARSHIP OF TEACHING & LEARNING

## Research Team

### LINDA LOGAN, PHARM.D.

**Research Areas:** Leadership, experiential and interprofessional education, hospital-based practice and efficacy of interprofessional teams in “whole person care”



**Opportunities for Collaboration:** Currently collaborating with UNC, UGA Counseling and Human Development Department and Experiential Education faculty

*ldlogan@uga.edu*

### DIANNE MAY, PHARM.D.

**Research Areas:** Drug information services, policy development and formulary management, literature evaluation, gastroesophageal reflux disease, adverse drug reactions



**Opportunities for Collaboration:** Pharmaceutical health services, outcomes and policy

*dimay@augusta.edu*

### SHARMON OSAE, PHARM.D.

**Research Areas:** Improvement in quality measures, optimization of medication management among geriatric, and assessment of clinical pharmacy trainee perceptions



**Opportunities for Collaboration:** Population health projects (i.e., text interventions or multi-site studies)

*sharmon.osae@uga.edu*

### BETH PHILLIPS, PHARM.D.

**Research Areas:** Ambulatory care pharmacy practice and residency training



**Opportunities for Collaboration:** Scholarship of Teaching & Learning, including residency training and the pharmacists' patient care process; ambulatory care pharmacy practice

*bbp@uga.edu*

### GURVINDER SINGH REKHI, PH.D.

**Research Areas:** Formulation development, pharmaceutical dosage forms, clinical supplies, CMC, regulatory submissions, transfer technology, patents



**Opportunities for Collaboration:** Research and development projects requiring: drug delivery, nanotechnology, controlled release, abuse-deterrent opioid formulations, GMP/GLP Training, Pharmaceutical/Biotechnology Manufacturing and Analytical Laboratory Student Training

*gsrekhi@uga.edu*

### MELODY SHEFFIELD, PHARM.D.

**Research Areas:** Evaluation and feedback provided to pharmacy students on experiential rotations; inpatient geriatrics



**Opportunities for Collaboration:** Evaluation of P4 students and geriatrics

*rx@uga.edu*

# SCHOLARSHIP OF TEACHING & LEARNING

## Research Team

### MISHA

#### THOMASON WATTS, PHARM.D.

**Research Areas:** Experiential education, health system pharmacy practice, geriatrics, internal medicine and residency preparation

**Opportunities for Collaboration:** Scholarship of Teaching & Learning and practice-based research

[mthomas02@uga.edu](mailto:mthomas02@uga.edu)



#### LINDSEY WELCH, PHARM.D.

**Research Areas:** Pharmacy experiential education including student/preceptor development, intervention and assessment

**Opportunities for Collaboration:** Patient outcomes and student professionalism

[lhwelch@uga.edu](mailto:lhwelch@uga.edu)



### CATHERINE WHITE, PH.D.

**Research Areas:** Pharmacokinetics of new investigational therapeutic agents/environmental toxins including both *in vitro* and *in vivo* testing; analysis of data to generate pharmacokinetic parameters; bioanalytical analysis; stability testing, brain disposition of compounds; drug metabolism and educational research

**Opportunities for Collaboration:** Toxicology, preclinical evaluation of new therapeutic agents or formulations, drug delivery, medicinal chemistry, brain disposition of compounds, and educational research

[cwhite44@uga.edu](mailto:cwhite44@uga.edu)





# VASCULAR DISEASES

## Research Team

### TRISHA BRANAN, PHARM.D.

**Research Areas:** Sepsis complications, issues in Infectious Diseases, critical care education, innovative teaching methods and interprofessional education

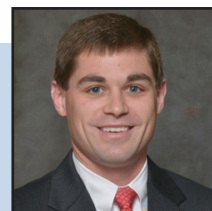


**Opportunities for Collaboration:** Vascular and hemodynamic changes in sepsis; Scholarship of Teaching & Learning

*tbranan@uga.edu*

### DANIEL CHASTAIN, PHARM.D.

**Research Areas:** HIV/AIDS, opportunistic infections, antimicrobial resistance, and antimicrobial stewardship



**Opportunities for Collaboration:** Co-investigators with shared research interests

*daniel.chastain@uga.edu*

### DAVID CRICH, DÈSSC

**Research Areas:** Medicinal chemistry, carbohydrate chemistry, synthetic methodology



**Opportunities for Collaboration:** Applications of medicinal chemistry to drug development

*David.Crich@uga.edu*

### SUSAN FAGAN, PHARM.D.

**Research Areas:** Stroke pharmacotherapy, animal models of ischemic stroke, hemorrhagic transformation, vascular protection after stroke, angiogenesis after stroke and stroke outcomes

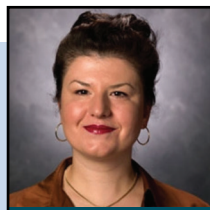


**Opportunities for Collaboration:** Stroke research

*sfagan@uga.edu*

### DUSKA FRANIC, PHARM.D., PH.D.

**Research Areas:** Patient-reported outcomes, quality of life, preference and utility measurement and pharmacoeconomics in various chronic conditions

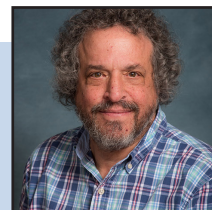


**Opportunities for Collaboration:** Health outcomes research in clinical trials

*dfranic@uga.edu*

### PHIL GREENSPAN, PH.D.

**Research Areas:** Health benefits of nutraceuticals and functional foods and effect of select natural extracts on inflammation, protein glycation and LDL oxidation



**Opportunities for Collaboration:** Labs interested in studying the mechanisms of atherosclerosis and diabetic complications

*greenspn@uga.edu*

# VASCULAR DISEASES

## Research Team

### NEIL GRIMSEY, PH.D.

**Research Areas:** Inflammatory signaling, pulmonary and neurovascular inflammation, acute respiratory distress syndrome, live cell imaging, biosensors and design of novel therapeutics

**Opportunities for Collaboration:** Imaging, vascular studies (primary cells), and kinase signaling assays

*neilgrimsey@uga.edu*



### ANTHONY HAWKINS, PHARM.D.

**Research Areas:** Choice of IV fluids, fluid resuscitation and hemodynamic monitoring

**Opportunities for Collaboration:** Critical care practice-based research, critical care education in the didactic and experiential curriculum

*hawkins@uga.edu*



### BLAKE JOHNSON, PHARM.D., MPH

**Research Areas:** Scholarship of Teaching and Learning, chronic disease state management, health disparities, cardiovascular disease

**Opportunities for Collaboration:** Local and state health disparity initiatives, clinical decision support tools for chronic disease state management

*brj53453@uga.edu*



### DEVIN LAVENDER, PHARM.D.

**Research Areas:** Ambulatory care pharmacy practice, chronic disease state management, pharmacy student/resident training and development

**Opportunities for Collaboration:** Development of ambulatory care pharmacy services, chronic disease state management (COPD, diabetes, hypertension, hyperlipidemia, heart failure), pharmacy student/resident training and development

*devin.lavender@uga.edu*



### PRIYA NARAYANAN, PH.D.

**Research Areas:** Mechanisms of neurovascular injury in retina, diabetic retinopathy and optic neuritis

**Opportunities for Collaboration:** Neurovascular diseases of the eye

*pnarayanan@augusta.edu*

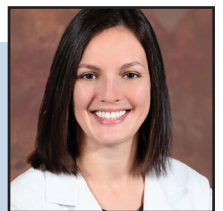


### ANDREA NEWSOME, PHARM.D.

**Research Areas:** Critical care pharmacy practice and translational sciences

**Opportunities for Collaboration:** With critical care and CET faculty

*andnewsome@augusta.edu*



# VASCULAR DISEASES

## Research Team

### BRADLEY PHILLIPS, PHARM.D.

**Research Areas:** Underlying mechanisms for cardiovascular disease in patients with sleep apnea

**Opportunities for Collaboration:** Clinical studies in sleep and sleep disorders in people with and without systemic diseases

*bgp@uga.edu*



### LILIAN SATTLER, PH.D.

**Research Areas:** Management of advanced heart failure, particularly through nutritional interventions in the context of existing pharmacotherapy; socioeconomic health disparities in cardiovascular health (CVH)

**Opportunities for Collaboration:** With faculty interested in CVH and clinical/translational research

*lilian@uga.edu*



### SOMANATH SHENOY, PH.D.

**Research Areas:** Molecular mechanisms regulating vascular permeability, angiogenesis, integrin activation, extracellular matrix remodeling and tumor growth

**Opportunities for Collaboration:** Assistance with statistical analysis for protocol approvals, research data analysis, and grant applications

*sshenoy@augusta.edu*



### SUSAN SMITH, PHARM.D.

**Research Areas:** Infectious Diseases and sepsis in critically ill patients

**Opportunities for Collaboration:** With other critical care clinical faculty with interests in Vascular Diseases

*susan.smith@uga.edu*



### ROBIN SOUTHWOOD, PHARM.D.

**Research Areas:** Diabetes therapy in hospitalized patients

**Opportunities for Collaboration:** Diabetes and diabetes-related complications

*rsouthwd@uga.edu*



### RANDALL TACKETT, PH.D.

**Research Areas:** Ethnic and gender differences in cardiovascular disease and pharmacotherapy; mechanisms of action of abused drugs and preventative education; mechanisms of adverse drug effects: recognition and minimization

**Opportunities for Collaboration:** Substance abuse; FDA regulations and drug approval

*rtackett@uga.edu*



# VASCULAR DISEASES

## Research Team

### MAY XIONG, PH.D.

**Research Areas:** Drug delivery and pharmaceuticals, specifically the design of macromolecules to improve iron chelation therapy and strategies to combat multi-drug resistance in bacteria

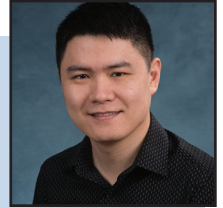


**Opportunities for Collaboration:** Any area in which drug delivery is a challenge

*mayxiong@uga.edu*

### YAO YAO, PH.D.

**Research Areas:** Blood Brain Barrier (BBB), stroke, laminin biology, muscular dystrophy; therapies for neurological disorders and muscular dystrophy



**Opportunities for Collaboration:** Basement membrane biology, blood-brain barrier, stroke, neurodegenerative disorders, muscular dystrophy

*yyao@uga.edu*

### HENRY YOUNG, PH.D.

**Research Areas:** Patient medication use to improve quality of life and health outcomes with a special interest in health services and outcomes in underserved and minority patient populations



**Opportunities for Collaboration:** Different contexts (e.g., medical conditions, diverse populations); areas of asthma, pain and cardiovascular disease

*hnyoung@uga.edu*